

**LAHORE UNIVERSITY OF MANAGEMENT SCIENCES**  
 Department of Electrical Engineering

**EE240 Circuits I**  
 Quiz 03

Name: \_\_\_\_\_

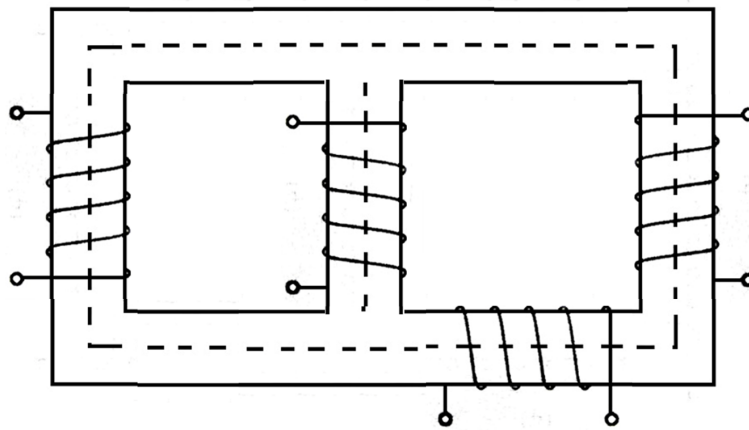
Campus ID: \_\_\_\_\_

Total Marks: 10

Time Duration: 20 minutes

**Question 1** (5 marks)

The figure below show windings marked on a magnetic flux-conducting core. Mark the dots on the windings to establish the mutual coupling. As there are four windings, you will need six different types of dots.



**Question 2** (5 marks)

Formulate the network equations for the following circuit using the Kirchhoff's voltage law.

